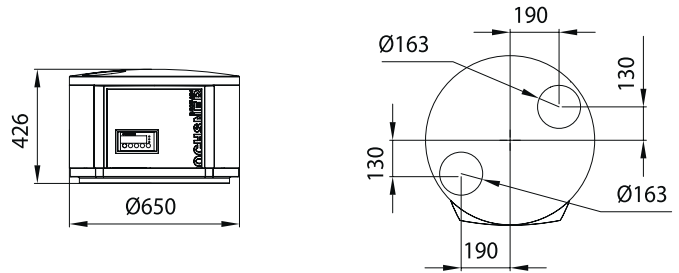


EUROPA MINI IWPL

Multifunctional appliances

Air / Exhaust air heat pump

- » Series: Europa
- » tww max. 60°C
- » Order number: 110244



Appliance data:

Dimensions (diameter x height)	[mm]	650 x 426
Type		internal HE
Weight	[kg]	45
Control electronic		Tiptronic light
COP EN255-3/EN16147		3,5/3,15
Housing colour		tiger white 29/11289/grey RAL 7016

Technical data:

Phases/Nominal voltage/Frequency	[~]/[V]/[Hz]	1/230/50
cos φ		0,75
Fuse (trip characteristic °C)	[A]	16
Max. operating current	[A]	4
Start-up current	[A]	16,5
Sound power level/sound pressure level (in 1m)	[dBA]	57/49

Performance data:

Operating point A21/W15-55

Heating capacity	[kW]	2,0
Power consumption	[kW]	0,5
COP		4,0

Operating point A15/W15-55

Heating capacity	[kW]	1,8
Power consumption	[kW]	0,49
COP		3,7

Hot water storage tank:

Storage tank (not part of supply)	max. 500l tank to be supplied on site
-----------------------------------	---------------------------------------

Electric auxiliary heater:

Type (not part of supply)	max. 2.5 kW element to be supplied on site
---------------------------	--

Condenser:

Type		plate heat exchanger
Material		stainless steel 1.4301
Quantity	[piece]	1
Max. operating pressure refrigerant	[bar]	25
Max. operating pressure working fluid	[bar]	6
Working fluid-Temperaturdifferenz	[K]	5
Operating range	[°C]	60
Working fluid		water
Testing pressure	[bar]	45
Working fluid-Volumenstrom	[m³/h]	0,4
Internal pressure	[mbar]	20
Circulation pump heating system WNA	internal	ZRS 12/2-3
Residual head I WNA external incl. VMT	[mbar]	130

Refrigerant circuit:

Number of circuits	[piece]	1
Refrigerant		R 134a
Refrigerant filling	[kg]	0,4

Compressor:

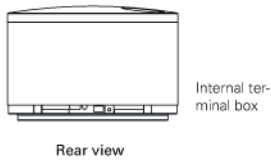
Type		fully hermetic/rolling piston
Quantity	[piece]	1
Power stages		1
Start-up type		direct
Voltage/Frequency	[V]/[Hz]	230/50

Fan:

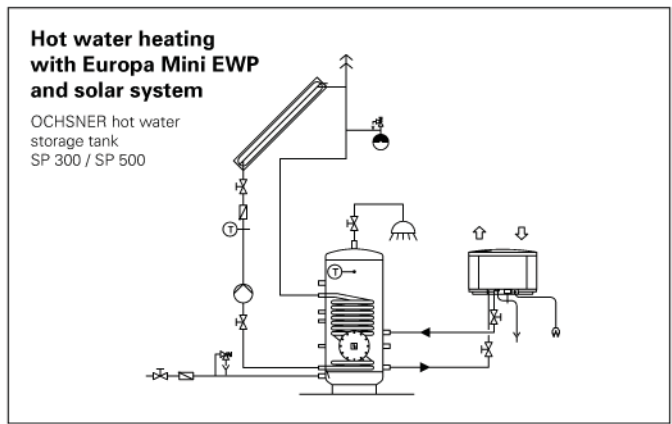
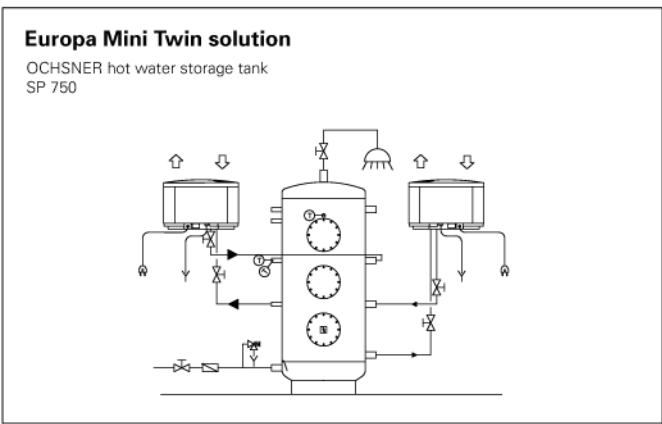
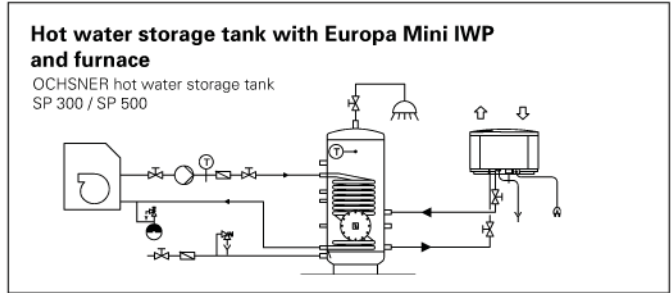
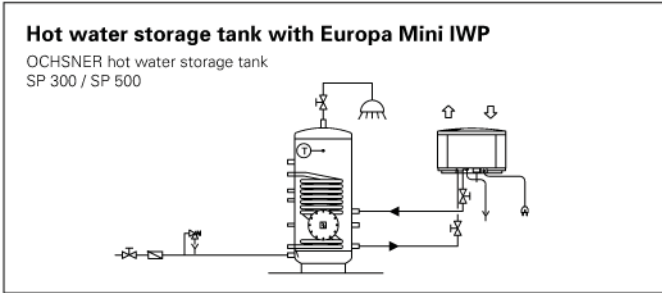
Type		Radial fan
Quantity	[piece]	1
Voltage/Frequency	[V]/[Hz]	230/50
Power consumption	[W]	68
Max. operating current	[A]	1,4
Air flow rate free blowing	[m³/h]	510-360
Continuous stage flow meter (for retrofitting)		Accessory Order No.: 930207
External pressure	[Pa]	80

Evaporator:

Type		air/finned tube
Material		Cu Al
Quantity	[piece]	1
De-icing technology / frost protection switch-off		hot gas
Max. operating pressure refrigerant	[bar]	25
Operating temperature min.	[°C]	+6
Operating temperature max.	[°C]	+40



EXAMPLES OF USE



Performance curves Europa Mini IWPL:

